

# LEARNING FROM BULLYING TRACES IN SOCIAL MEDIA

Jun-Ming Xu, Kwang-Sung Jun, Xiaojin Zhu, Amy Bellmore\*  
Dept. of Computer Sciences, Educational Psychology\*  
University of Wisconsin-Madison

# Snape's Worst Memory

2

Victim:  
Severus Snape

Defender:  
Lily Evans

Reinforcer:  
Peter Pettigrew

Bully:  
James Potter

Assistant:  
Sirius Black

Bystander:  
Remus Lupin



<http://harry-potter-spain.deviantart.com/art/Snape-s-Worst-Memory-27310861>

# Bullying (Peer Victimization)

3

Across a national sample of students in grades 4-12 in the U.S.,  
38% reported being bullied by others

32% reported bullying others [Vaillancourt et al., 2010]

More students involved as assistants, reinforcers , bystanders...

Multiple forms:



physical



relational



verbal

Venues: physical world, online (cyber-bullying)

# Bullying Hurts

4

## Symptoms of Victims

Interpersonal problems

Depression, anxiety, loneliness, low self-worth

Absent from school more often and lower grade

Every day, about 160,000 kids stay home from school  
because of the fear of being bullied [The U.S. CDC]

Lethal school violence and suicide

Bullying victims are between 2 to 9 times more likely to  
consider suicide than non-victims [Kim et al., 2009]

# Limitations of the State-of-the-Art

5

Traditional social science studies are handicapped by data scarcity

- Small sample size

- Low/no temporal resolution

- Time consuming



Computational study is largely unexplored

- Only a few studies on cyber-bullying, overlooked other bullying episode

# Bullying Traces in Social Media

6

**Bullying trace:** social media post talking about actual bullying episode (in physical world or online)

**Reporting a bullying episode:** *“some tweens got violent on the n train, the one boy got off after blows 2 the chest... Saw him cryin as he walkd away :( bullying not cool”*

**Accusing someone as a bully:** *“@USERNAME i didnt jump around and act like a monkey T T which of your eye saw that i acted like a monkey :( you’re a bully”*

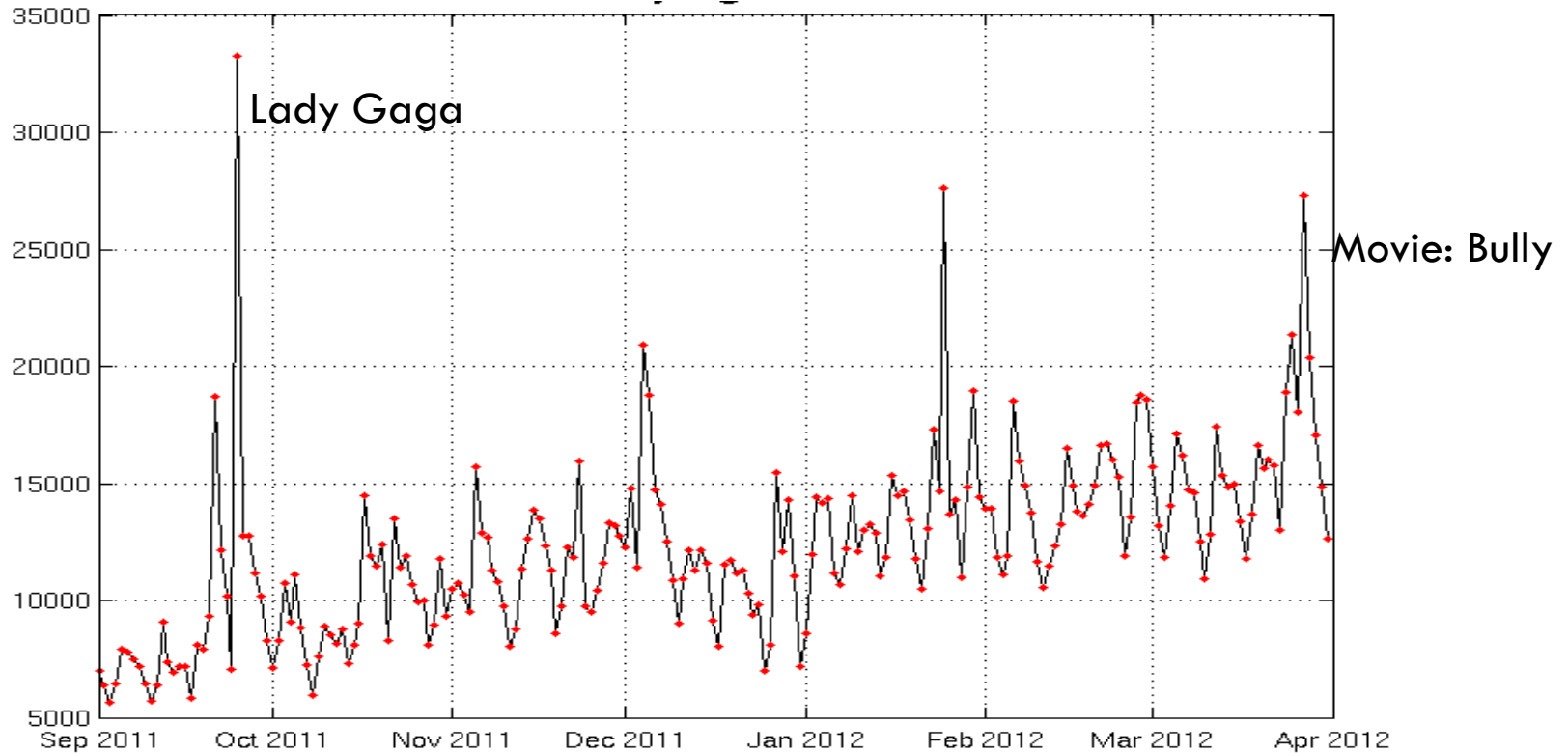
**Revealing self as a victim:** *“People bullied me for being fat. 7 years later, I was diagnosed with bulimia. Are you happy now?”*

**Cyber-bullying direct attack:** *“Lauren is a fat cow MOO BITCH”*

# Bullying Traces in Social Media

7

Daily number of bullying traces collected



Pros: Large sample size, High temporal resolution, Easy to collect  
Cons: Unknown biases

# Questions NLP Can Help with

8

Is the post a bullying trace or not?

**Text Categorization**

Who are the participants? What are their roles?

**Role Labeling**

How do they feel during the episode?

**Sentiment Analysis**

What are people saying about bullying?

**Latent Topic Modeling**

.....



# Manually Labeled Training Data

9

Collected from Twitter Streaming API

Each has keyword such as “bully”, “bullied”, or “bullying”

Re-tweets are removed

Annotated by experienced experts

Is it a bullying trace or not ( $\kappa = .72$ )

Bullying roles of author and person mentions ( $\kappa = .61$ )

Is the bullying trace written jokingly ( $\kappa = .81$ )

# Task A: Text Categorization

10

## Classify bullying or not

684 out of 1762 posts in enriched dataset were bullying traces

*“Is Google + the new BULLY PLAYGROUND?”* (no episode)

*“You know what? I’ve never seen a Bully beat a kid up for their lunch money lol.”* (the episode did not happen)

## Standard procedure

Tokenization (emoticon, hash-tag, user mention, url)

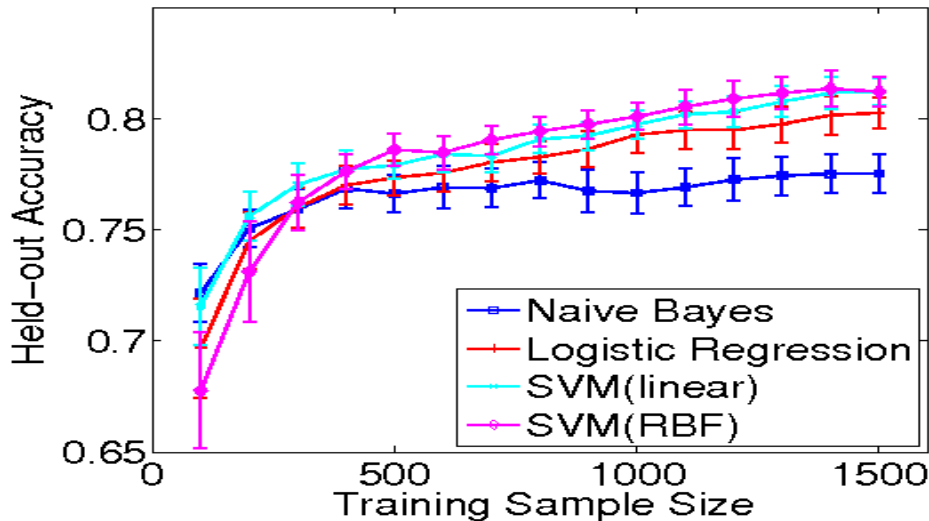
Bag-of-words representation (unigrams and bigrams)

SVM (RBF kernel)

Tune parameters with 10-fold cross-validation

# Task A: Text Categorization (cont.)

11



Majority class baseline  
Accuracy 61%

## Future Work:

Apply the trained model to other social media stream

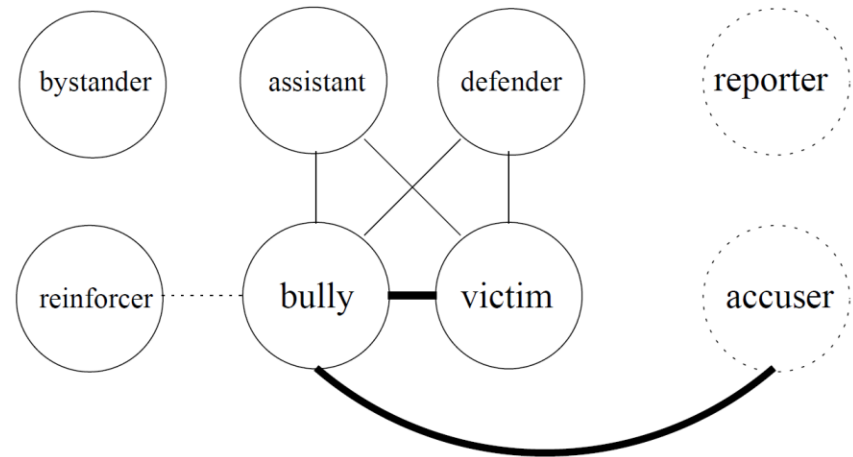
Keyword filtering -> Other forms

Twitter -> Facebook, google+,...

English -> Other language, Weibo

# Task B: Role Labeling

12



**AUTHOR(R):** “**We(R)** visited **my cousin(V)** today & #Itreallymakesmemad that **he(V)** barely eats bec **he(V)** was bullied . :( **I(R)** wanna kick the crap out of those **mean kids(B)**.”

# Task B-1: Author's Role Labeling

13

## Multi-class text categorization task

	predicted as				
	A	B	R	V	O
A	33	3	39	10	1
B	5	25	57	11	0
R	15	5	249	27	0
V	1	4	48	109	0
O	1	1	37	3	0

A: Accuser

B: Bully

R: Reporter

V: Victim

O: Other

Accuracy: 61%

Baseline acc: 43%

## Future work:

Take advantage of self-mention

Jointly classify many tweets authored by the same person

# Task B-2: Person-Mention's Role Labeling

14

## Sequential tagging

	Accuracy	Precision	Recall	F-1
CRF	0.87	0.53	0.42	0.47
SVM	0.85	0.42	0.31	0.36

A: Accuser      B: Bully  
R: Reporter     V: Victim  
O: Other        N: Not a person

	predicted as					
	A	B	R	V	O	N
A	0	4	5	10	0	4
B	0	406	13	125	103	302
R	0	28	31	67	0	13
V	0	142	28	380	43	202
O	0	112	4	42	156	86
N	0	78	4	41	16	9306

CRF

## Future work:

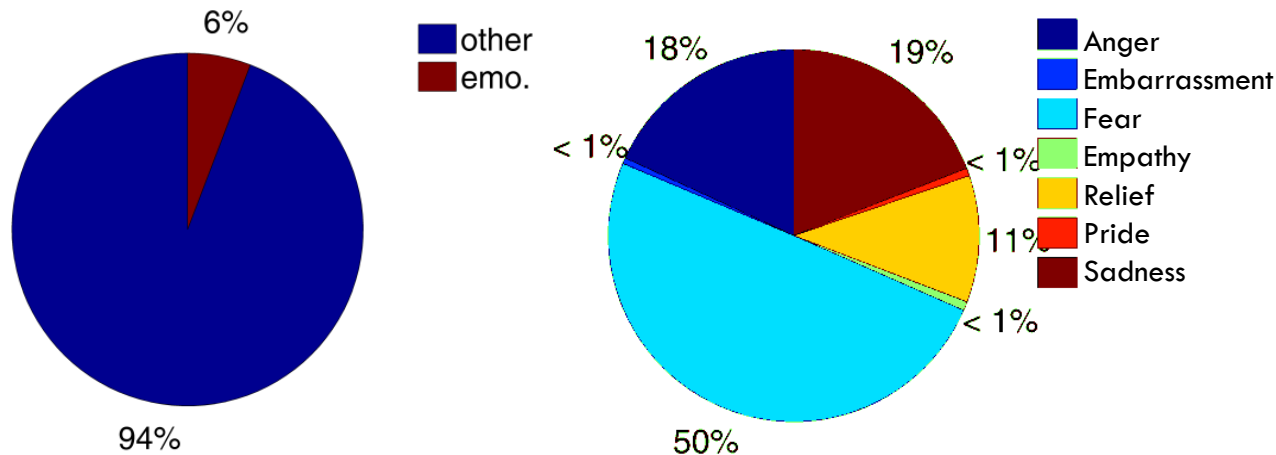
Recognize person mentions: “sister”, “teacher”, “girls”...

Train NER on informal tweets

# Task C: Sentiment Analysis

15

## Emotions: a wide range, some in extremes



**Teasing:** lacking of severity, orthogonal to other emotions

*“I may bully you but I love you lots. Just like jelly tots!”*

*“@USERNAME lol stop being a cyber bully lol :p.”*

Binary text classification as in Task A (accuracy 0.89, baseline 0.86)





# Future Works

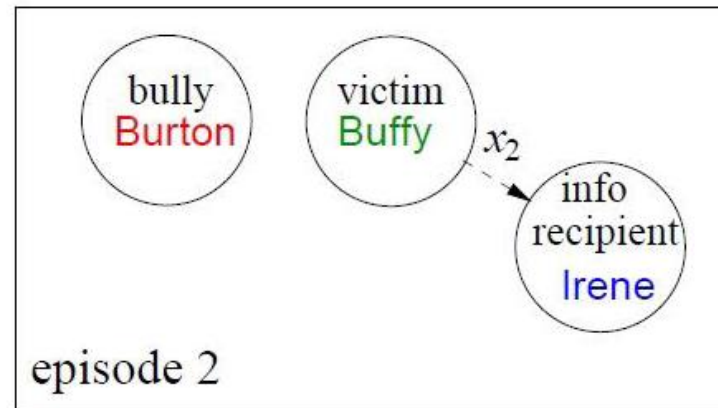
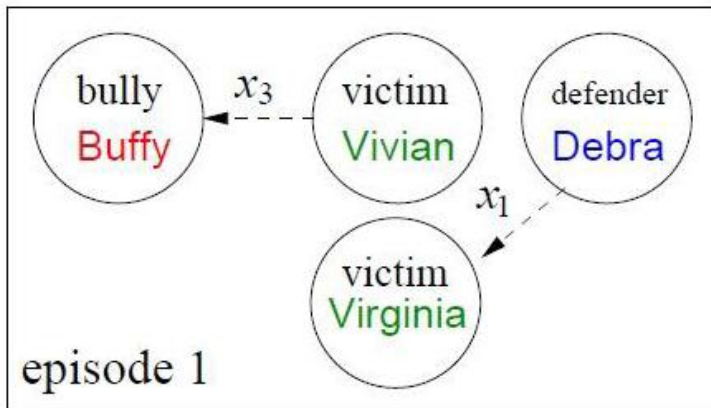
17

## Recovering the whole structure of an episode

Debra: *“Virginia, I heard Buffy call you and Vivian fat—ignore her!”*

Buffy to Irene: *“Burton picked on me again because I’m only 5 feet”*

Vivian: *“Buffy I’m not fat! Stop calling me that.”*



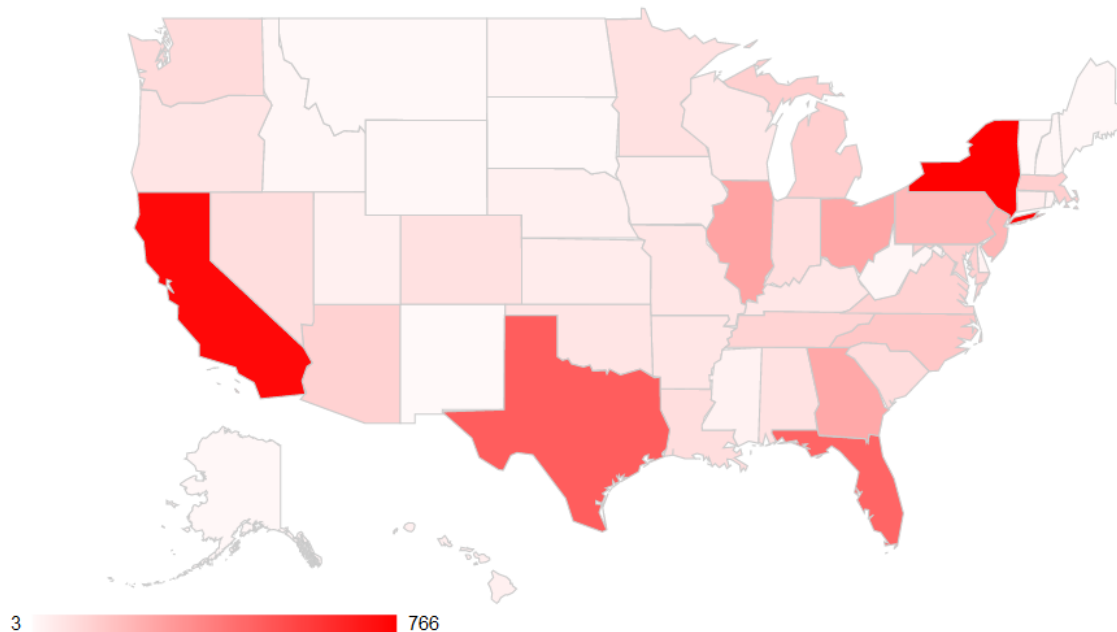
# Future Works (Cont.)

18

Mild intervention: showing a bullying intensity map

Help victim to cope

Raise public awareness



# Conclusions

19

Social media is an important data source for the study of bullying

NLP community can contribute more

Data and code available online

<http://research.cs.wisc.edu/bullying>

# Thanks!

20

<http://research.cs.wisc.edu/bullying>

